



Delta Region Community Health Systems Development (DRCHSD) Program

2019 Community Health Status Report Henry County Medical Center, Paris, TN

The below tables and graphs provide information from a variety of secondary data sources about demographics, social and economic factors, quality indicators, and identification of other HRSA grants in the region. Please note, the data collected for this report is the most current information as of September 2019. Where available, comparative data is provided for the average of the state and US. Please refer to [Appendix A](#) for a description of the secondary data indicators and sources. Refer to [Appendix B](#) to learn how to look up the secondary data for yourself.

Hospital Overview (AHA)

Hospital Name	Henry County Medical Center
Address	301 Tyson Ave, Paris, TN 38242
Overall County Health Ranking	47 out of 95
Interim CEO	Lisa Casteel

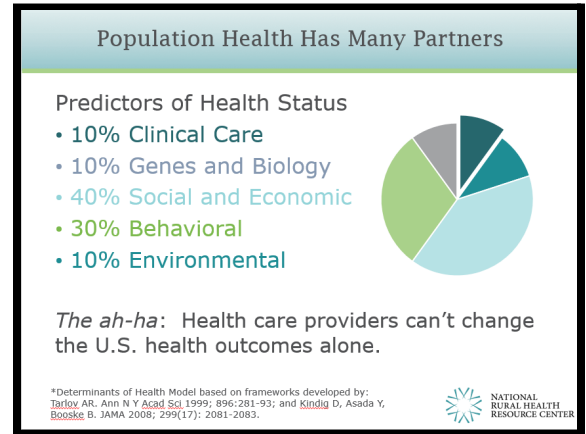


This project is supported by the Health Resources and Services Administration (HRSA) of the U.S. Department of Health and Human Services (HHS) under grant number U65RH31261, Delta Region Health Systems Development, \$8,000,000 (0% financed with nongovernmental sources). This information or content and conclusions are those of the author and should not be construed as the official position or policy of, nor should any endorsements be inferred by HRSA, HHS or the U.S. Government.

WHY POPULATION HEALTH?

The US health care industry is undergoing changes in financing and service delivery from one that rewards "volume" to one that is based on "value". The new health industry goals are articulated in the Institute for Healthcare Improvement's (IHI) Triple Aim¹:

- *Improve health of population*
- *Improve patient care (quality and satisfaction)*
- *Lower health costs per person*



The Triple Aim acknowledges that clinical care alone cannot improve community health outcomes. Social and economic conditions in the environment where people are born, live, work, play and age affect health.² These determine a community's ability to embrace healthy behaviors.³



Hospitals and clinics who use population health strategies can more effectively use community resources to address identified concerns. It also provides a common framework from which local health care systems, government/ non-government agencies, and organizations can work together to improve the health of their community.⁴

¹ The IHI Triple Aim. (n.d.) [Institute for Healthcare Improvement](#)

² Social Determinants of Health. (n.d.) [Healthy People 2020](#)

³ Community Commons. (n.d.) [Community Health Needs Assessment \(CHNA\) Health Indicators Report](#).

⁴ Milken Institute School of Public Health. George Washington University (2015, April 27). [What is Population Health?](#)

HOW TO GET STARTED

This document compiles secondary data (obtained from state and federal sources) about your local county and state. This is not all the data available for your location, but merely a snapshot. We hope that you will find this document understandable to such an extent that you will confidently share this material with anyone you meet.

In the future, we will use this information, along with input from your hospital/clinic leadership and community joint partners, to agree on some specific community health needs. We call these priority areas. Next, you, your hospital/clinic leadership, and community partners will determine some action steps that can be taken to address those needs. Sometimes that looks like an education program, opening a new clinic, addressing transportation needs, helping patients with mental health needs get appropriate care, and much more. You play a BIG role in changing the health of your community!

In the future, you can track specific measures by referring to the websites cited for more current information. A "How to" is included in [Appendix B](#), Secondary Data Search Steps to do Yourself.



Background

Henry County Medical Center (HCMC) is a county-owned and operated, nonprofit institution affiliated with the Tennessee Hospital Association. The facility has 142 beds and serves Henry County and the adjoining region. They are located in Paris, TN and offer services including Emergency Medical Service, an off-site Center for Wellness & Rehabilitation and a Home Health and Hospice service, the medical center provides a variety of outpatient services as well as inpatient care.⁵

The mission of Henry County Medical Center is to provide the highest quality, affordable healthcare services and education to the citizens of Henry County and the adjoining counties, helping to improve the quality of health in the region.⁶

HCMC's vision statement is, "Transforming our community's health through nationally recognized, accessible and sustainable healthcare".⁷

Demographics

The population in Henry County has a much higher percentage of disabled population than the state and national averages (17.1% compared to 8.7% nationally). Sixty-six percent of the population of this county lives in an area designated as 'rural' and 22.7% of them are over 65.

	Henry	TN	Nation
Population ⁸	32,450	6,715,984	327,167,434
% Rural Population 2010 ⁹	66.8%	33.6%	19.3%
Population Age 65+ ⁸	22.7%	16.0%	15.6%
Population Below 18 ⁸	20.8%	22.4%	22.6%
Population Change 2010-2018 ⁸	N/A	6.7%	6%
Veteran Population ⁸	2,952	441,554	18,939,219

⁵ About Us. Henry County Medical Center. Retrieved from <https://www.hcmc-tn.org/about-hcmc/>

⁶ Mission. Henry County Medical Center. Retrieved from <https://www.hcmc-tn.org/about-hcmc/mission-vision/>

⁷ Vision. Henry County Medical Center. Retrieved from <https://www.hcmc-tn.org/about-hcmc/mission-vision/>

⁸ County, State, and National Demographic and Social & Economic Data from [United States Census Bureau](#)

⁹ County, State, and National Demographic Data from [County Health Rankings & Roadmaps](#)

Disabled Population under 65, 2013-2017 ⁸	17.1	11.2	8.7%
--	------	------	------

Social & Economic Factors

Henry County’s per capita income is lower than the state and national average (\$22,952 vs \$27,277 – \$31,177). Consequently, Pickens County has a higher percentage of the population receiving public health insurance alone, 23.6%, children eligible for free or reduced lunch, 60%, and higher unemployment rates, 4.5%, than the state and national average. Henry County has a good high school graduation rate (91%) but have a lower than average percentage of the population with some college (46%) compared to the state (60%) and Top U.S. Performers (73%). The 150% Federal Poverty level measures annual cash income for an individual or family. These numbers show the people eligible for program, subsidies, and benefits like SNAP, Head Start, Children’s Health Insurance Program, and the National School Lunch Program.

	Henry	TN	Top U.S. Performers
High School Graduate or Higher, percent of persons age 25+, 2013-2017 ¹⁰	91%	90%	96%
Some College ¹⁰	46%	60%	73%
Median Household Income, 2013-2017 ¹⁰	\$41,800	\$51,300	\$67,652
Per Capita income in last 12 months, 2013-2017 ⁸	\$22,952	\$27,277	\$31,177
Public Health Insurance Coverage Alone (Medicare, Medicaid, VA) ¹¹	23.6%	20.6%	19.6%
Unemployment Rates 2013-2017 ¹¹	4.5%	3.7%	2.6%
Uninsured Population ⁸	12%	11%	6%
Children in single-parent households ¹⁰	36%	35%	20%
Children eligible for free or reduced lunch ¹⁰	60%	56%	32%
	Henry	TN	Nation

¹⁰ County, State, and Top U.S. Performers Social & Economic Factors data from [County Health Rankings & Roadmaps](#).

¹¹ United States Census Bureau [American FactFinder](#).

2017 Persons Below 150% Federal Poverty Level ¹²	10,277	1,746,688	74,202,606
---	--------	-----------	------------

Health Behavior and Outcomes

Henry County ranked 77 out of 95 counties in Tennessee for health behaviors. Health behaviors, such as physical activity and eating healthy foods, can lead to positive health outcomes such as longer life, mobility, mental wellness, healthy pregnancies and births, prevention of chronic and acute disease, and management of chronic disease. Socially isolated individuals have an increased risk for poor health outcomes, including chronic disease, unhealthy behaviors and obesity.¹³ The use of cigarettes, lack of physical activity, dietary choices and other elements can lead to numerous chronic diseases and comorbidities including cardiovascular disease, diabetes and cancer. In Henry County, alcohol impaired driving is 45% compared to Tennessee, 26%, and Top U.S. Performers, 13%. This results in more unintentional injuries and higher mortality rates. Additionally, the rates of people who regard themselves as having poor or fair health is 29% Henry Co., and 12% Top U.S. Performers. This measure relates to quality of life and describes how healthy people are while alive. People who rate themselves as “poor or fair health” have a twofold higher mortality risk than persons with “excellent” health.¹³

	Henry	TN	Top U.S. Performers
Adult Smoking ¹⁴	23%	22%	14%
Physical Inactivity ¹⁴	33%	27%	19%
Drug Overdose Deaths per 100,000 ¹⁴	11	24	10
Excessive Drinking ¹⁴	14%	14%	13%
Poor or Fair Health ¹³	21%	19%	12%
Teen Births per 1,000 females aged 15-19 ¹⁴	44	33	14
Obese Adults >age 20 BMI >30 ¹⁴	34%	33%	26%

¹² County, state and national data from [American FactFinder](#).

¹³ County, State, and Top U.S. Performers Health Outcomes data from [County Health Rankings & Roadmaps](#).

¹⁴ County, State, and Top U.S. Performers Health Behaviors data from [County Health Rankings & Roadmaps](#).

Alcohol Impaired Driving ¹⁴	45%	26%	13%
Poor Mental Health Days reported in the last 30 days ¹³	4.8	4.5	3.1

Physical Environment

Henry County ranked 36 out of 95 counties on Physical Environment. Henry County has a Food Environment Index slightly higher than the state of TN (7.4 vs 6.3) but lower than Top U.S. Performers (8.7). This measure rates proximity to healthy foods and cost on a 0 (worst) to 10 (best) scale. Lower scores correlate with higher prevalence of overweight, obesity, and premature death. Severe housing problems are also seen in Henry County, 12%, which is similar to TN at 15%. This relates to high housing costs, overcrowding, and lack of plumbing facilities. Lastly, the commute time in Henry County (22%) is lower than the state (34%), but higher than the U.S. Top Performers (15%). High long commute percentages imply good jobs are not located close to home. Long commuters typically have higher blood pressure and body mass index contributing to obesity than those who work close to home.

	Henry	TN	Top U.S. Performers
Food Environment Index ¹⁴	7.4	6.3	8.7
Severe Housing Problems ¹⁵	12%	15%	9%
Air pollution-particulate matter (av daily density of particulate matter in $\mu\text{g}/\text{m}^3$) ¹⁵	10.4	10.0	6.1
Long Commute (>30min) ¹⁵	22%	34%	15%

¹⁵ County, State, and Top U.S. Performers Physical Environment data from [County Health Rankings & Roadmaps](#).



Clinical Care

Pickens County ranked 21 out of 95 for Clinical Care. When comparing to the state of Tennessee, Henry County has a fair amount of primary care providers (1,350:1 vs 1,390:1). Residents have access to a good number of mental health providers, primary care physicians, and dentists which compliments the county ranking.

	Henry	TN	Top U.S. Performers
Primary Care Physicians ¹⁶	1,350:1	1,390:1	1,050:1
Mental Health Providers ¹⁶	550:1	700:1	310:1
Preventable Hospital Stays Related to Ambulatory-Care per 100,000 Medicare Enrollees ¹⁶	5,170	5,305	2,765
Flu Vaccinations ¹⁶	49%	48%	52%
Access to Dentists per 100,000 ¹⁶	2,030:1	1,880:1	1,260:1
Mammography screening: Medicare Enrollees ages 65-74 that received annual screening ¹⁶	39%	40%	52%

¹⁶ County, State, and Top U.S. Performers Clinical Care data from [County Health Rankings & Roadmaps](#).

The graph below shows in another way, that Henry County has at times had a shortage of primary care physicians compared to the state of TN. Since 2015, Henry County residents have had about the same number of providers per residents as TN and the United States. This is quite an accomplishment considering 63% of Henry County is designated as rural. Availability of primary care physicians and dentists is essential for individuals to receive preventative care and referrals to appropriate specialty care.

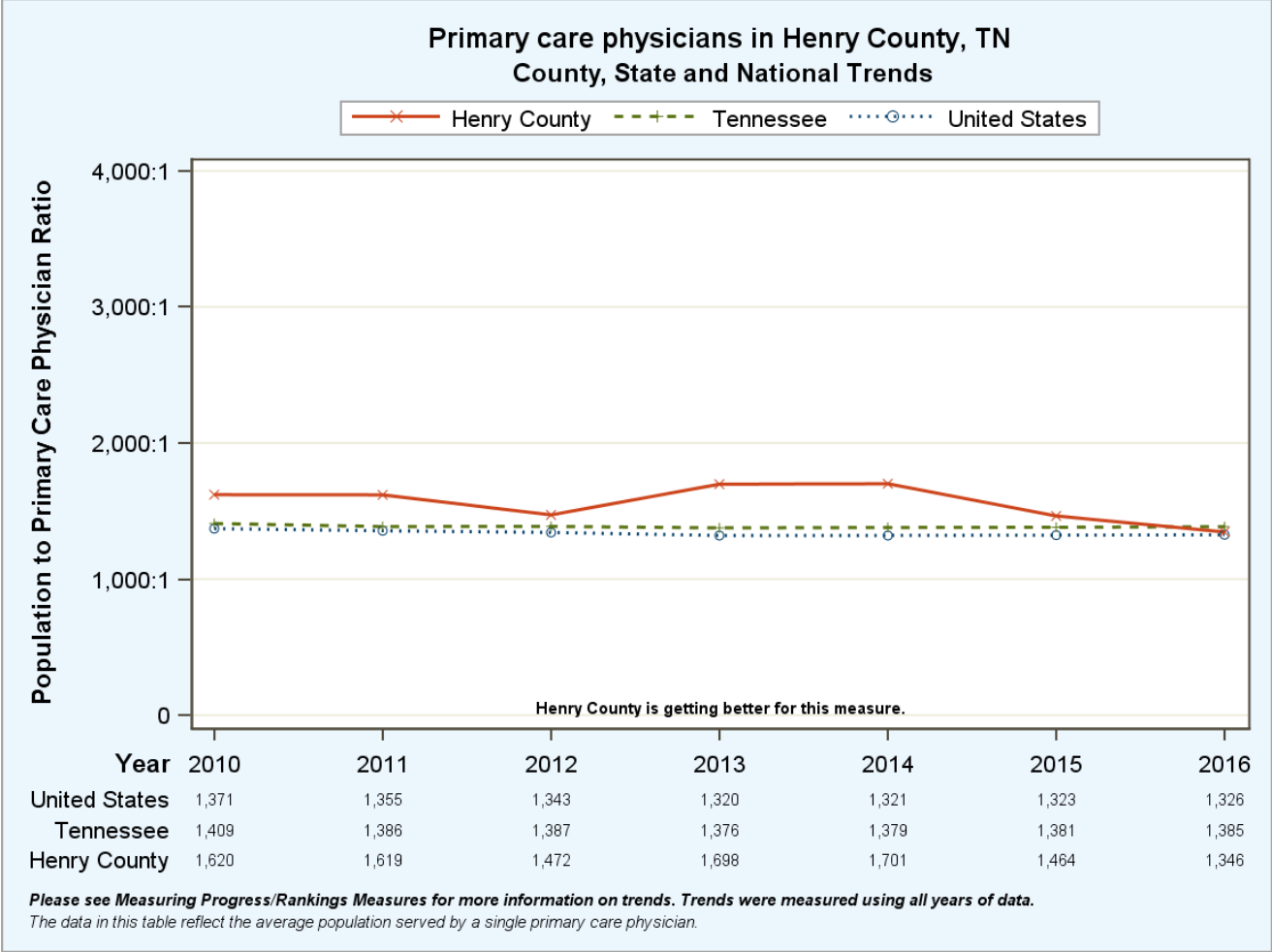


Fig.1. Primary care physicians in Henry County, TN County, State, and National Trends, 2010-2016. Graph from County Health Rankings, *Henry County, TN*. Retrieved from <https://www.countyhealthrankings.org/app/tennessee/2019/rankings/henry/county/outcomes/overall/snapshot>

Health Outcomes

Henry county is ranked 47 out of 95 for health outcomes. The Infant Mortality rate in Henry County is 9 per 100,000 people, which is slightly higher than the Top U.S. Performers, 4 per 100,000 people. Infant mortality represents the health of the most vulnerable group, contributes to years of potential life lost (YPLL) for a location, and is used to examine global and racial inequalities. Injury deaths are an important measure because injuries are one of the leading causes of death of those under 45 years old. Poisoning, motor vehicle deaths, and falls are included under unintentional injuries and suicides and homicides fall under intentional injuries. Injuries are also a significant portion of emergency department visits. The injury death rate in Henry County, 112/100,000 is higher than the state of TN, 86/100,000 and Top U.S. Performers, 57/100,000.

	Henry	TN	Top U.S. Performers
Life Expectancy ¹³	74.5	76.1	81.0
Premature Age-Adjusted Mortality (YPLL) ¹³	510	450	280
Infant Mortality per 1,000 in one year ¹³	9	7	4
Diabetes Prevalence ¹³	15%	13%	9%
Injury Deaths per 100,000 ¹⁰	112	86	57



Hospital Compare¹⁷

Survey of patients' experiences: HCAHPS (Hospital Consumer Assessment of Healthcare Providers and Systems) is a national survey that asks patients about their experiences during a recent hospital stay. These scores are important because they provide comparable data from a patient's perspective between hospitals. They take into account patient satisfaction and perception of care and not just the outcome of the patient. Reimbursements are also linked to HCAHPS scores and organizations need to take the results seriously to maximize reimbursements. Use the below scores with caution, as the number of surveys may be too low to reliably assess hospital performance in rural areas. *Source: [Hospital Compare](#)*

Patients who reported:

	Henry County Medical Center	TN	Nation
Nurses "always" communicated well	80%	81%	81%
Doctors "always" communicated well	85%	83%	81%
"Always" received help as soon as they wanted	64%	72%	70%
Staff "always" explained about medicines before giving it to them	66%	67%	66%
Their room and bathroom was "always" clean	81%	75%	75%
Area around their room was "always" quiet at night	74%	66%	62%
YES, they were given information about what to do during their recovery time	86%	87%	87%
"Strongly Agree" they understood their care when they left the hospital	52%	54%	53%
Gave their hospital a rating of 9 or 10 on a scale from 0 (lowest) to 10 (highest)	72%	73%	73%
YES, they would definitely recommend the hospital	68%	72%	72%

¹⁷ Medicare.gov. [Hospital Compare](#)

Web Presence

<https://www.hcmc-tn.org/>

APPENDIX A

DESCRIPTION OF SECONDARY DATA INDICATORS

Data Areas	Description	Source and Dates
Population	Total population count.	<i>US Census Bureau, Quick Facts: County, State, and United States. 2018</i>
% Population Living in Rural	Percentage of population living in rural areas. Rural areas are identified using population density, count, and size thresholds.	<i>US Census Bureau, Quick Facts. 2013-2017</i>
Population Age 65+	Estimated percentage of the population in the report area age 65 or older.	<i>US Census Bureau, Quick Facts: Alabama, Pickens County Alabama, and United States. 2018</i>
Population Below 18	Estimated percentage of the population in the report area under 18 years of age.	<i>US Census Bureau, Quick Facts: County, State, and United States. 2018</i>
Population Change 2010 - 2018	Total change in total population between the years April 1, 2010- July 1, 2018.	<i>US Census Bureau, Quick Facts: County, State, and United States. 2010-2018</i>
Veteran Population	Percentage of the population age 18 and older that served (even for a short time), but is not currently serving, on active duty in the U.S. Army, Navy, Air Force, Marine Corps, or the Coast Guard, or that served in the U.S. Merchant Marine during World War II.	<i>US Census Bureau, Quick Facts: County, State, and United States. 2013-2017.</i>
Disability Population	Percentage of the total civilian non-institutionalized population with a disability.	<i>US Census Bureau, Quick Facts: County, State, and United States. 2013-2017</i>
High School Graduate or Higher, percent of persons age 25+, 2013-2017¹⁸	Percentage of ninth-grade cohort that graduates in four years	<i>County Health Rankings data from the Alabama State Department of Education. 2016-2017</i>
Some College	Percentage of adults ages 25-44 with some post-secondary education	<i>County Health Rankings data from the American Community Survey, by the Census Bureau, 5 year estimates. 2013-2017</i>
Median Household Income, 2013-2017	Income where half of households in a county earn more and half of households earn less.	<i>County Health Rankings data from the US Census Bureau's Small Area Income and Poverty Estimates (SAIPE) program. 2017</i>
Per Capita income in last 12 months, 2013-2017	Mean income computed for every man, woman, and child in a particular group. Dividing the aggregate income of a particular group by the total population of the group.	<i>US Census Bureau, Quick Facts: County, State, and United States. 2013-2017</i>

¹⁸ County Health Rankings & Roadmaps. (n.d.) [Social & Economic Factors](#)

Public Health Insurance Coverage Alone	Percentage of residents who are covered solely by public health insurance (Medicare, Medicaid, VA)	<i>US Census Bureau, FactFinder: County, State, and United States. 2013-2017</i>
Unemployment Rates, 2013-2017	Total unemployment of the civilian non-institutionalized population age 16 and older (non-seasonally adjusted).	<i>US Department of Labor, Bureau of Labor Statistics. 2017 - March.</i>
Uninsured Population	Percentage of the total civilian, non-institutionalized, population under 65 without health insurance coverage.	<i>County Health Rankings data from US Census Bureau, <i>Small Area Health Insurance Estimates</i>. 2016.</i>
Children in Single Parent Households	Percentage of children that live in a household headed by a single parent. 5 year estimates	<i>County Health Rankings data from the American Community Survey. 2013-2017</i>
Children Eligible for Free/Reduced Price Lunch	Public school students eligible for Free/Reduced Price lunch.	<i>County Health Rankings data from National Center for Education Statistics, NCES - Common Core of Data. 2016-2017.</i>
2017 Persons Below 150% Federal Poverty Level	An income measure used by the federal government to determine who is eligible for subsidies, programs, and benefits. Ex: four person federal poverty level household income=\$25,100 (\$25,100)x1.5=\$37,650 or less	<i>US Census Bureau, FactFinder: County, State, and United States.. 2013-2017</i>
Adult Smoking	Percentage of adults who are current smokers.	<i>County Health Rankings data from the Behavioral Risk Factor Surveillance System. 2016</i>
Physical Inactivity	Adults aged 20 and older self-report no leisure time for activity, based on the question: "During the past month, other than your regular job, did you participate in any physical activities or exercises such as running, calisthenics, golf, gardening, or walking for exercise?".	<i>County Health Rankings data from Centers for Disease Control and Prevention, National Diabetes Surveillance System and the Behavioral Risk Factor Surveillance System. 2013.</i>
Drug Overdose Deaths for 100,000	Number of drug poisoning deaths per 100,000 population	<i>County Health Rankings data from the Compressed Mortality File. 2015-2017</i>
Excessive Drinking	Percentage of adults reporting binge or heavy drinking.	<i>County Health Rankings data from the Behavioral Risk Factor Surveillance System. 2016</i>
Poor or Fair Health	Percentage of adults reporting fair or poor health on the BRFSS.	<i>County Health Rankings from Behavioral Risk Factor Surveillance System, 2016.</i>
Teen Births	Number of births to women ages 15 - 19 per 1,000 female population	<i>County Health Rankings data from National Center for Health Statistics from the Centers for Disease Control and Prevention, National Vital Statistics System. 2011-2017.</i>
Obese Adults	Adults aged 20 and older self-report that they have a Body Mass Index (BMI) greater than 30.0 (obese).	<i>County Health Rankings data from Centers for Disease Control and Prevention, National Diabetes Surveillance System. 2015.</i>

Alcohol Impaired Driving	Percentage of driving deaths with alcohol impairment	County Health Rankings data from the <i>Fatality Analysis Reporting System</i> . 2013-2017
Poor Mental Health Days	Average number of mentally unhealthy days reported in the last 30 days (age adjusted).	County Health Rankings data from <i>Behavioral Risk Factor Surveillance System</i> , 2016.
Food Environment Index	Index of factors that contribute to a healthy food environment (0-worst and 10-best). Takes into account income, recreation opportunities, food expenditures, distance of stores and restaurants.	County Health Rankings data from the <i>U.S. Department of Agriculture Food Environment Atlas and Map the Meal Gap from Feeding America</i> . 2015-2016
Severe Housing Problems	Percentage of households with at least 1 of 4 housing problems: overcrowding, high housing costs, lack of kitchen facilities, or lack of plumbing facilities.	County Health Rankings data from the <i>U.S. Department of Housing and Urban Development (HUD)'s Comprehensive Housing Affordability Strategy</i> . 2011-2015.
Air Pollution-Particulate Matter	Average daily density of fine particulate matter in micrograms per cubic meter.	County Health Rankings data from the <i>Center for Disease Control and Prevention's National Environmental Public Health Tracking Program</i> . 2014
Long Commute	Among workers who commute in their car alone more than 30 minutes. 5 year estimates.	County Health Rankings data from the <i>American Community Survey</i> . 2013-2017
Access to Primary Care Physicians per 100,000	Number of primary care physicians per 100,000 population. Doctors classified as "primary care physicians" by the AMA include: General Family Medicine MDs and DOs, General Practice MDs and DOs, General Internal Medicine MDs and General Pediatrics MDs. Physicians age 75 and over and physicians practicing sub-specialties within the listed specialties are excluded	County Health Rankings data from the <i>Area Health Resource File</i> compiled by the <i>American Medical Association, American Hospital Association, US Census Bureau, Centers for Medicare & Medicaid Services, and National Center for Health Statistics</i> . 2016
Access to Mental Health Providers per 100,000	Ratio of the county population to the number of mental health providers including psychiatrists, psychologists, clinical social workers, and counsellors that specialize in mental health care.	County Health Rankings data from the <i>National Provider Identification Registry and the National Plan and Provider Enumeration System</i> . 2018
Preventable Hospital Stays	Rate of hospital stays for conditions that are ambulatory care sensitive (ACS) per 1,000 Medicare enrollees. ACS conditions include pneumonia, dehydration, asthma, diabetes, and other conditions which could have been prevented if adequate primary care resources were available and accessed by those patients.	County Health Rankings data from the <i>Centers for Medicare and Medicaid Services Office of Minority Health's Mapping Medicare Disparities Tool</i> . 2016
Flu Vaccinations	Percentage of fee for service Medicare enrollees that had an annual flu vaccination.	County Health Rankings data from the <i>Centers for Medicare and Medicaid Services Office of Minority Health's</i>

		<i>Mapping Medicare Disparities Tool. 2016</i>
Access to Dentists per 100,000	Number of dentists per 100,000 population. This indicator includes all dentists - qualified as having a doctorate in dental surgery (D.D.S.) or dental medicine (D.M.D.), who are licensed by the state to practice dentistry and who are practicing within the scope of that license.	<i>County Health Rankings data from the Area Health Resource File/National Provider Identification file maintained by the Centers for Medicare and Medicaid Services. 2017</i>
Cancer Screening – Medicare Mammograms	Percentage of female Medicare enrollees, age 65-74, who have received an annual mammogram	<i>County Health Rankings data from the Center for Medicare and Medicaid Services Office of Minority Health’s Mapping Medicare Disparities Tool. 2016</i>
Life Expectancy	Average number of years a person can expect to live.	<i>County Health Rankings data from the National Center for Health Statistics and the National Vital Statistics System. 2015-2017</i>
Premature Death Mortality	Years of Potential Life Lost (YPLL) before age 75 per 100,000 population for all causes of death, age-adjusted to the 2000 standard. YPLL measures premature death and is calculated by subtracting the age of death from the 75 year benchmark.	<i>County Health Rankings data from the National Center for Health Statistics-Mortality Files from National Vital Statistics System.2015-2017</i>
Infant Mortality	Rate of deaths to infants less than one year of age per 1,000 births.	<i>County Health Rankings data from the Compressed Mortality File from CDC WONDER mortality data. 2011-2017</i>
Diabetes Prevalence	Percentage of adults aged 20 and older who have ever been told by a doctor that they have diabetes.	<i>County Health Rankings data from the National Diabetes Surveillance System using the Centers for Disease Control and Prevention, Behavioral Risk Factor Surveillance System. 2015</i>
Injury Deaths	Number of deaths due to injury per 100,000 population.	<i>County Health Rankings data from CDC WONDER: Compressed Mortality File. 2013-2017</i>

Appendix B

SECONDARY DATA SEARCH STEPS TO DO YOURSELF

County Health Rankings

1. Go to <https://www.countyhealthrankings.org>
2. Click on “Explore Health Rankings”
3. Scroll down to “Find County Rankings” and type in your county. Your state should come up with it.
4. Scroll through measures
5. You can click on any blue measures, such a “Premature Death”, to compare to all other counties in your state on a specific measure.
6. While you have a measure selected, notice “Map, Data, Description, and Data Source” highlighted in blue. Each of these can also be clicked on to provide a better understanding of the data. Data shows you the actual numbers/data the graphs and rankings are based off. Description describes what was measured in greater detail. Data source tells you where the data originally came from (CDC, Census Data, etc).

American FactFinder (archived census data)

1. Go to the main page by typing in or clicking this <https://factfinder.census.gov/faces/nav/jsf/pages/index.xhtml>
 2. Scroll down to Community Facts and type in your county and state. Quick facts from population to education to housing is included.
- OR**
1. Go to the main page by typing in or clicking this <https://factfinder.census.gov/faces/nav/jsf/pages/index.xhtml>
 2. Click Guided Search and you can choose to look for specific information on people, housing, business or industries, or a specific dataset or table.
 3. If you click people, it will give you topics pertaining to people you can include in your tables (income, insurance coverage, basic counts, etc). Click the headings in black to open the specific choices which are blue. When you click a blue topic, it is added to your selections on the right.
 4. You can also hit next without highlighting any topics.
 5. Geographies is highlighted next. You click on the “—select a geographic type—” drop down box and select state. It will list the states and you need to click the state you want and then “Add to your selections” button.
 6. Next you can select another geographical area to compare it to by choosing county instead of state as your geographic type. You again select your

desired state and all the possible counties will be listed. Click your county and then "Add to your selections" button again.

7. Your geographies are now set, and you can hit "Next".
8. Skip of Race/Ethnic Groups by just hitting "Next".
9. You can then select Topics and click "View" in blue to see your tables

United States Census Bureau (census data moving forward)

1. Go to <https://data.census.gov/cedsci>
2. Type in your county, state in the search box.
3. You can click "Explore the Data" box or scroll down to look at the data tables, maps, and pages related to that location.

OR

1. Got to <https://www.census.gov/>
2. Scroll down until you see a section titled "Access Local Data/QuickFacts" and click it.
3. Enter your state and hit enter. Enter your county and hit enter.
4. You can now see a table with a lot of census data.